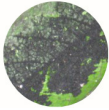




DISEASE & FUNGAL CONTROL

DISEASE & FUNGAL PROBLEMS

Black Mold



Leaf Rust



Powdery Mildew



Blight



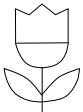
Bacterial Blast & more

HOW IT WORKS

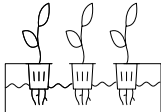
SNS DC smothers the microbial cell wall in preservatives and inhibitors that prevent fungus, bacteria and molds from decomposing the plant cell wall.

WHERE TO USE

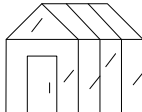
GARDEN



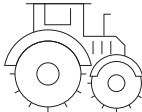
HYDROPONICS



GREENHOUSE



AGRICULTURE



SIZES AVAILABLE



Ready to Use



Concentrated

Contact our sales team for available bulk sizes

Always refer to product labels

O-Day REI 
(Re-Entry Interval)

SAFE AROUND CHILDREN & PETS 
WHEN USED AS DIRECTED

EPA Exempt 
FIFRA 25(b)

OMRI LISTED
For Organic Use - OMRI.org

Mixing Compatibility



APPLICATION

Mixing DC

Shake well before mixing.
Mix 3-8 oz. of concentrate per gallon of water.

Foliar Spray

Spray all plant parts (leaves, stems, stalk, crowns & other). Spraying lightly on top of the soil may be helpful in reducing unwanted yeast and molds.

Row Crops

Mix 2-6 quarts of concentrate per acre. Feed solution onto the root area every time you water until affected area is reduced.

Use DC every 7-14 days for preventative maintenance. Refer to the supplemental label & use guide